



Read all operating instructions and the following installation information below before commencing installation.

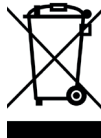
Customer Services Contact Details:

CUSTOMER SERVICES DEPT.

PO BOX 890, Forest Row, East Sussex,
RH19 9LX, United Kingdom

Tel. 0203 5899 520 or find us
online at
www.trendiswitch.com

At the end of their useful life
the packaging and product
should be disposed of via a
suitable recycling centre. **Do not burn.**



USB Twin Charger / Power Socket

Technical Specification:

Power socket Input

13A 200-250VAC 50/60 Hz 0.128A USB

Power Output

5V DC +/- 5% 2.4A Max Per Socket.

Operating Temperature: -15° C to 45° C

Safety Standards :BS1363, BS7533,
EN60950 -1

EMC Standards:

EN55022, EN61000-32,
EN61000-3-3, EN55024

HS8536699099



Trendiswitch USB Twin Charger /
Power Socket eliminates the need for
external chargers.

USB Output 1 = 5V 2.1A (2100mA)

USB Output 2 = 5V 2.1A (2100mA)

The USB sockets are ideal for charging
most mobile devices including:

- Smart phones
- Tablet computers
- MP3 players
- Digital cameras
- Hand held games consoles
- Battery back ups
- USB rechargeable lights

Switched Socket independent of USB
charger. The switches only control the
mains 240V UK 3 pin socket.

This product fits a standard 35mm
deep wall box.

trendiswitch^{room}
www.trendiswitch.com

DISCLAIMER

This equipment is intended for
installation in accordance with the
supplied fitting instructions. It should be
fixed in the approved and conventional
way to a 35mm deep folded metal wall
box that conforms with BS 4662.

No decorative, abrasive or domestic
cleaning products should come into
contact with the accessory (further
information is available on request).

It should not be used in areas of high
humidity (bathrooms etc), nor within
reach of any water.

If you are unsure consult a qualified
electrician before installation. No
liability can be accepted if the product is
installed or used in any other way than
for which it is designed.

GUARANTEE (Applies to UK & Eire)

This accessory is guaranteed against
faulty workmanship or materials for
a period of twelve months and will be
repaired or replaced free of charge
on condition that it is returned to
Customer Services Dept, and that:
(see notes a-e).

a) The installation procedure has been
carried out correctly.

b) The accessory has not been taken
apart or repaired by any unauthorised
person.

c) The Bill of Sale (dated) accompanies
the accessory for repair or replacement.

d) The product has not been exposed to
decorative or cleaning materials.

e) This unit contains **NO** user
serviceable parts

This Guarantee does not affect the
statutory rights of the Consumer. In
no circumstances can the Company
accept responsibility for any loss or
damage said to arise from the use of
this product.

The Electrical inserts used on these
accessories are manufactured in
accordance with the relevant British and
European Standards where applicable.

All accessories are manufactured under
an accredited BS EN ISO 9001:2015
Quality Management System.



trendiswitch^{room}



Scan QR code for extra
information on this product

T | 0203 5899 520

E | sales@trendiswitch.com



/TrendiSwitch



@Trendiswitch

**PO BOX 890, Forest Row,
East Sussex, RH19 9LX,
United Kingdom**

*Trendiswitch Limited is a UK
Company Registration No. 08849300*

IMPORTANT: PLEASE READ BEFORE INSTALLATION

- A) The general installation procedure must be read before any work commences.
- B) If unsure of the installation you must consult a qualified Electrician.
- C) All metal plates must be earthed in accordance with current IEE regulations.
- D) This product is designed to fit a 35mm depth wall box conforming to BS 4662.
- E) The plastic wall gasket (when supplied) MUST be fitted to prevent any chemical reaction (i.e. Tarnishing to the plate).
- F) In order to maintain the surface quality of the front plate, periodic cleaning should take place using a dry lint free soft cloth only.

GENERAL INSTALLATION / CONNECTION PROCEDURE

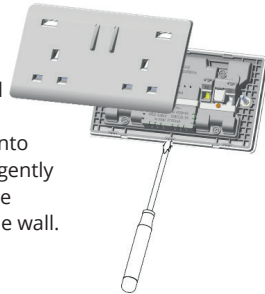
- 1) Isolate the mains supply from the existing accessory by switching off at the main fuse box to prevent electrocution.
- 2) Remove the retaining screws and carefully withdraw accessory from wall box to reveal connections at rear.
- 3) Check that no mains voltage is present within existing accessory by use of 240 volt test-lamp (if available). disconnect all cables noting their respective connections.

- 4) Bend back top and bottom wall box mounting lugs if present.
- 5) Connect accessory with reference to diagrams shown for each accessory.
- 6) Check all connections thoroughly.
- 7) Mount accessory, taking care not to trap any cables beneath plate fixing screws. Do not over tighten the fixing screws.
- 8) Switch on mains supply at fuse box and check operation of accessory.

CFX Products Front Plate Removal

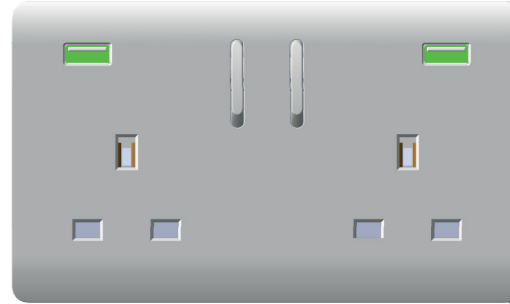
- 1. Locate the slot in the plastic gasket. This will be found behind the front plate in the centre of the gasket on the bottom edge of the product.

- 2. Place a suitably sized flat bladed screwdriver into this slot and gently lever the plate away from the wall.



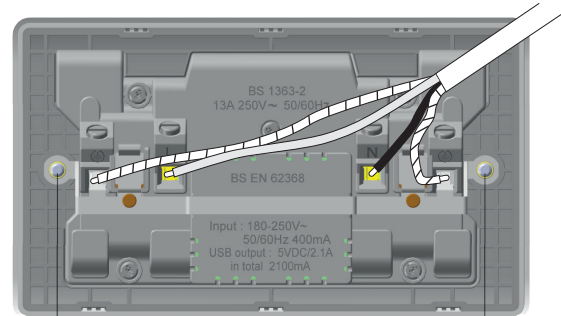
trendiswitch[®]
www.trendiswitch.com

13Amp Switched Double Sockets with Twin USB Charging Outlets



13Amp Switched Double Sockets with Twin USB Charging Outlets

— Neutral ▨ Earth — Live



Although the product has twin earth terminal it will function with one earth connected.



trendiswitch[®]



Scan QR code for extra information on this product

T | 0203 5899 520
E | sales@trendiswitch.com



**PO BOX 890, Forest Row,
East Sussex, RH19 9LX,
United Kingdom**

*Trendiswitch Limited is a UK
Company Registration No. 08849300*